

BUILDING  
YOUR TIME

PATRIMI

# Villa Dinant

Detached Villas at La Finca Golf





*Sunny afternoons*

# Villa Dinant

## Location

Dinant development is located at La Finca golf resort belonging to Algorfa town, Costa Blanca south. A relaxed and healthy landscape surrounded by nature with a great offer in its services, leisure and sports facilities. Just few kilometres away from the most stunning beaches in the Costa Blanca.

## Near projects

Lagos R12, Villas ELE, Villas Liège & Leuven.

 Calle Bigastro  
La Finca Golf, Algorfa, Alicante.

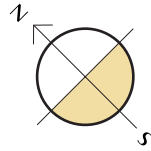
La Finca Golf, a nature environment.



# Villas Dinant

## Plot Sizes

2126	2117(D+)
420,00	500,00



# PATRIMI

## General surfaces

All measures are expressed in M2.






# Villa Dinant

## The project

Modern design and natural materials that match perfectly with the natural environment.

## Features

 4 Bedrooms

 3 Bathrooms

 Private pool

 Private parking









## Villa Dinant

## Materials that last

### General finishes

The facade is a balanced combination of **monolayer and masonry** that protecting the house and connecting perfectly with the natural environment of the resort.

Your home is protected with a **fully installed alarm system** which cameras. Includes also an **advanced home automation system** to manage the **motorized shutters** and lighting interior.







## Villa Dinant 2126

Light is the main character.

### General interior finishes

Smooth white colour is used on the plastic painting inside, Valena Next from Legrand electric fittings and doors equipped with stainless steel handlers.

It is included an advanced domotic system to manage different devices at your home. Indoor and outdoor flooring is a cement imitation porcelain stoneware.

The sliding grey aluminium exterior carpentry includes tilt and turn system in the bathrooms and electric blinds.

### Other Finishes

- ✱ Air-conditioning pre-installation: ducted for the main and first floor.
- 📡 Alarm system totally fitted with sensors and cameras.





PATRIMI



## Villa Dinant

# Natural textures for functional spaces.

### Kitchen finishes

Dinant stands out on the kitchen details, with a wide and elegant great scale imitation terrazzo worktop, and great durability with no maintenance.

Here we can find a well-balanced, practical and real luxury space, with white melamine furniture and wood effect.

The built-in sink is completed with a GRB high pipe tap model Kala, emphasizing the spectacular integrated extraction hood.

### Bathroom finishes

The 60 by 30 cm white mate tiles in walls combine with Great scale imitation Terrazzo porcelain and Italian shower. The shower comes equipped with a shower screen, tap and spray fittings model KALA from GRB. A hanging unit and sink over worktop with KALA mixer taps.

In ensuite bathroom a hanging unit with imitation wood worktop, white drawers and rectangular sink over worktop.





PATRIMI





## Villa Dinant, Floor Plans & measures House - 2126



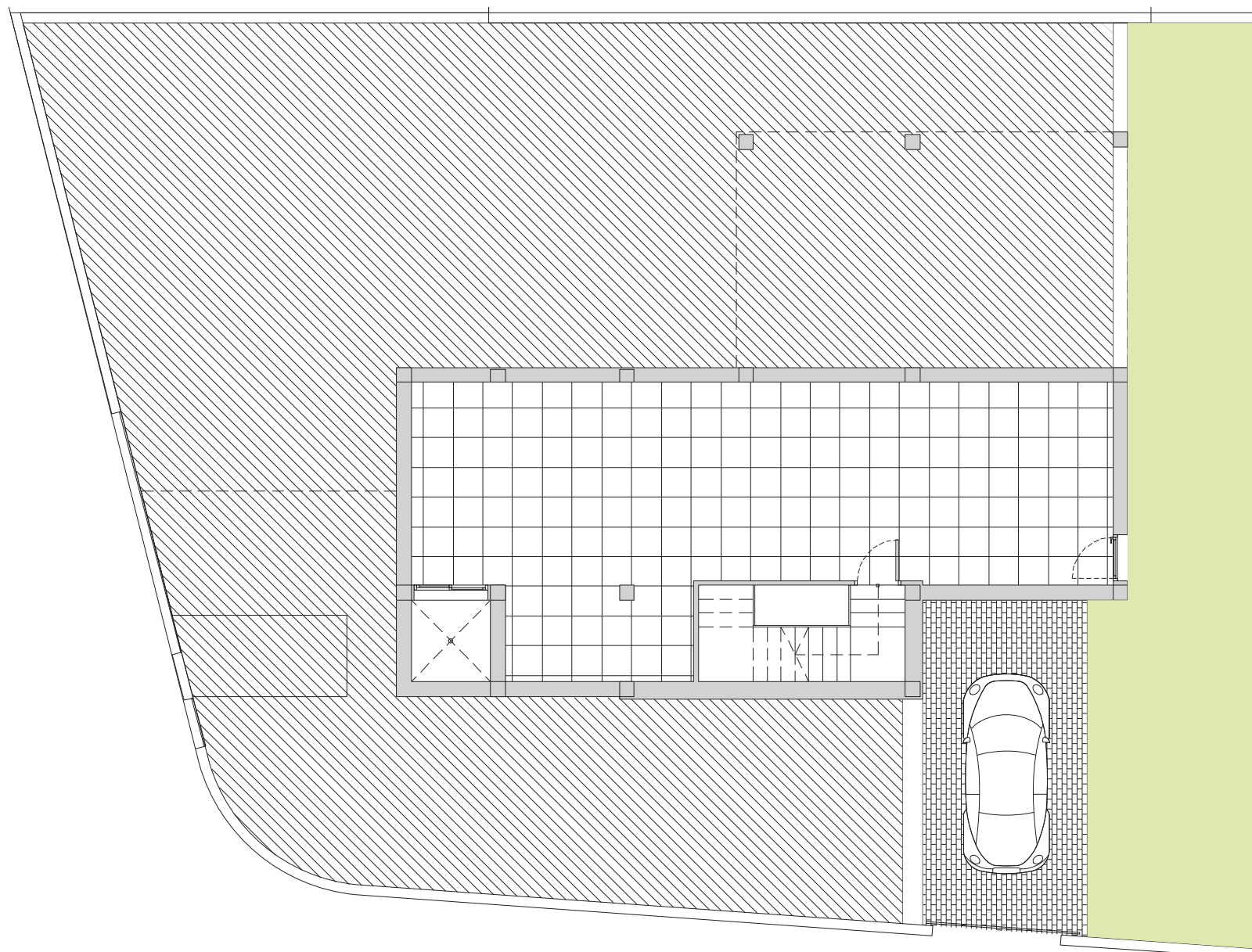
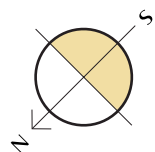
# Villa Dinant

## Basement Floor



### Built surfaces

Built area	155,70
Pool area	8x4
Terraces area	59,00
Basement area	82,90
Parking	28,00



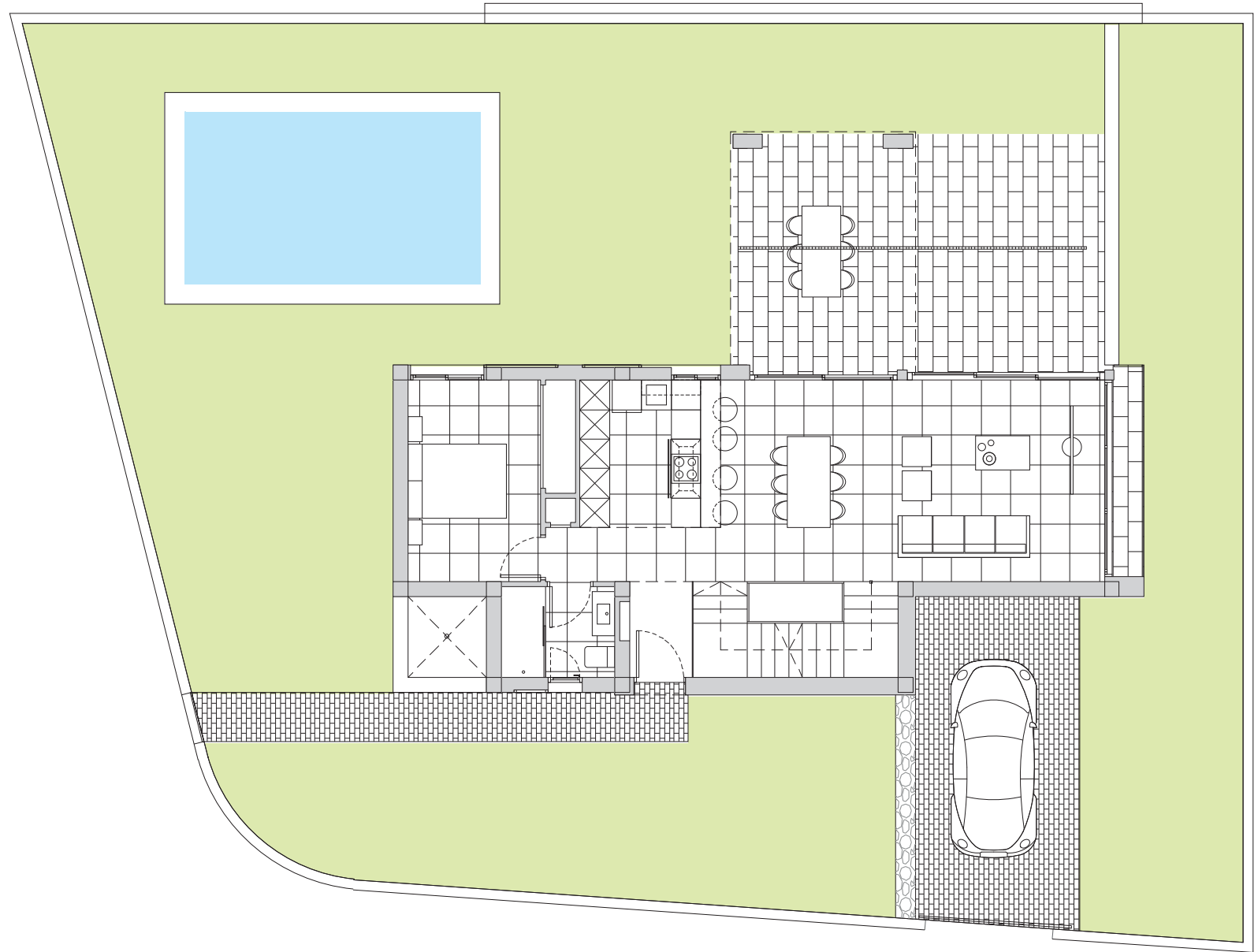
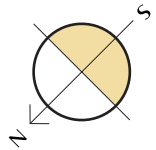
# Villas Dinant

## Ground floor.



### Built surfaces

Built area	155,70
Pool area	8x4
Terraces area	59,00
SKC	43,71
Bedroom 1	12,60
Bathroom 1	4,20
Corridor	0,80
Hall	2,50
Stairs	6,40
Terrace	39,20





# Villa Dinant

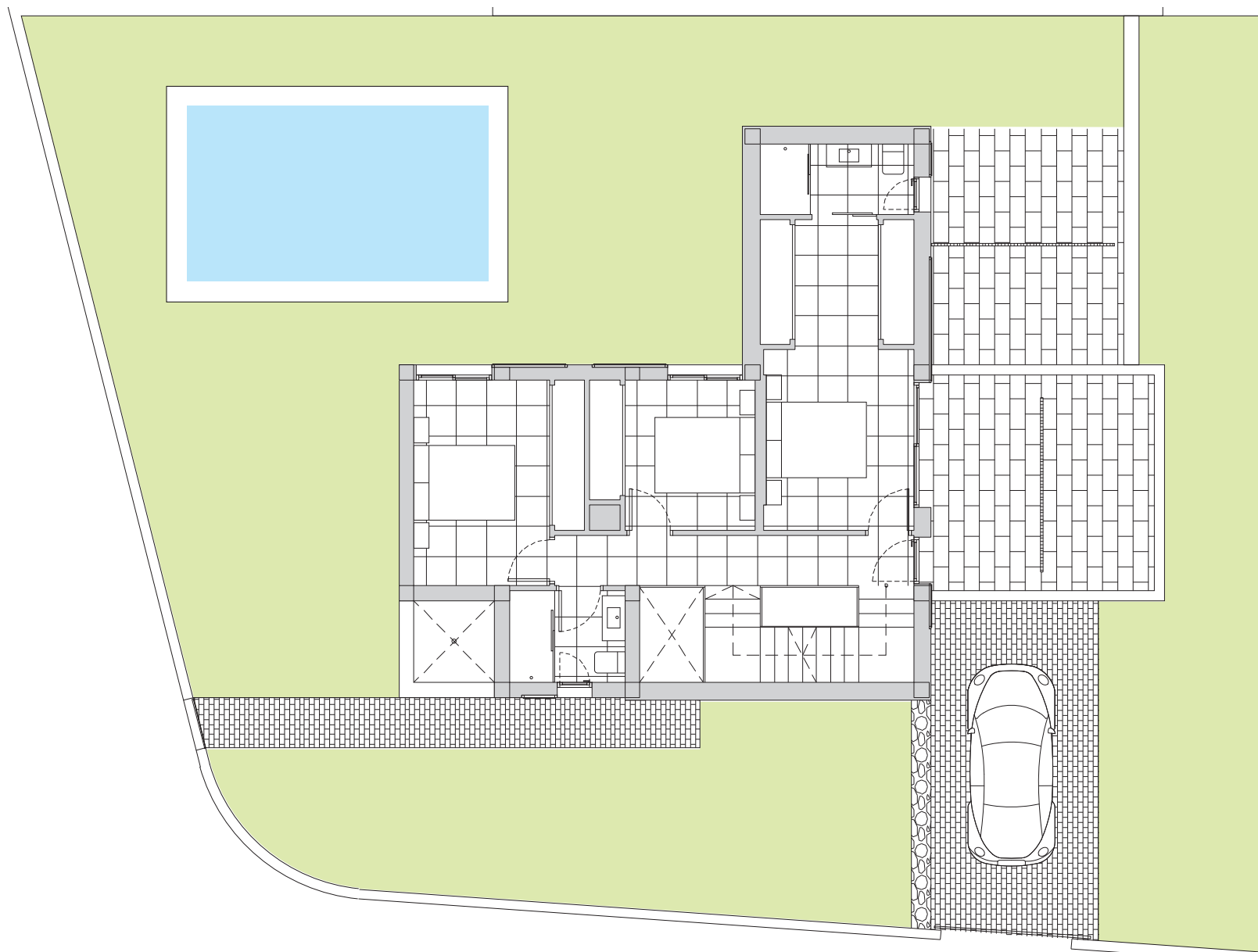
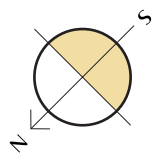
## First floor.



### Built surfaces

Built area	155,70
Pool area	8x4
Terraces area	59,00

Bedroom 2	19,00
Bedroom 3	9,50
Bedroom 4	13,20
Bathroom 2	4,30
Bathroom 3	4,20
Corridor	7,20
Stairs	6,40



**BUILDING  
YOUR TIME**

Legal Notice: Standard floor plan, which does not include the common use areas. Each residence has its own floor plan, which may vary slightly from the standard one. The furniture and household items that appear in the plan are merely for decorative purposes. This is not a contractual document. This plan can be modified by the Project Management Team according to construction or design needs.

All measures are expressed in M2.

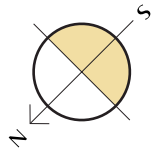
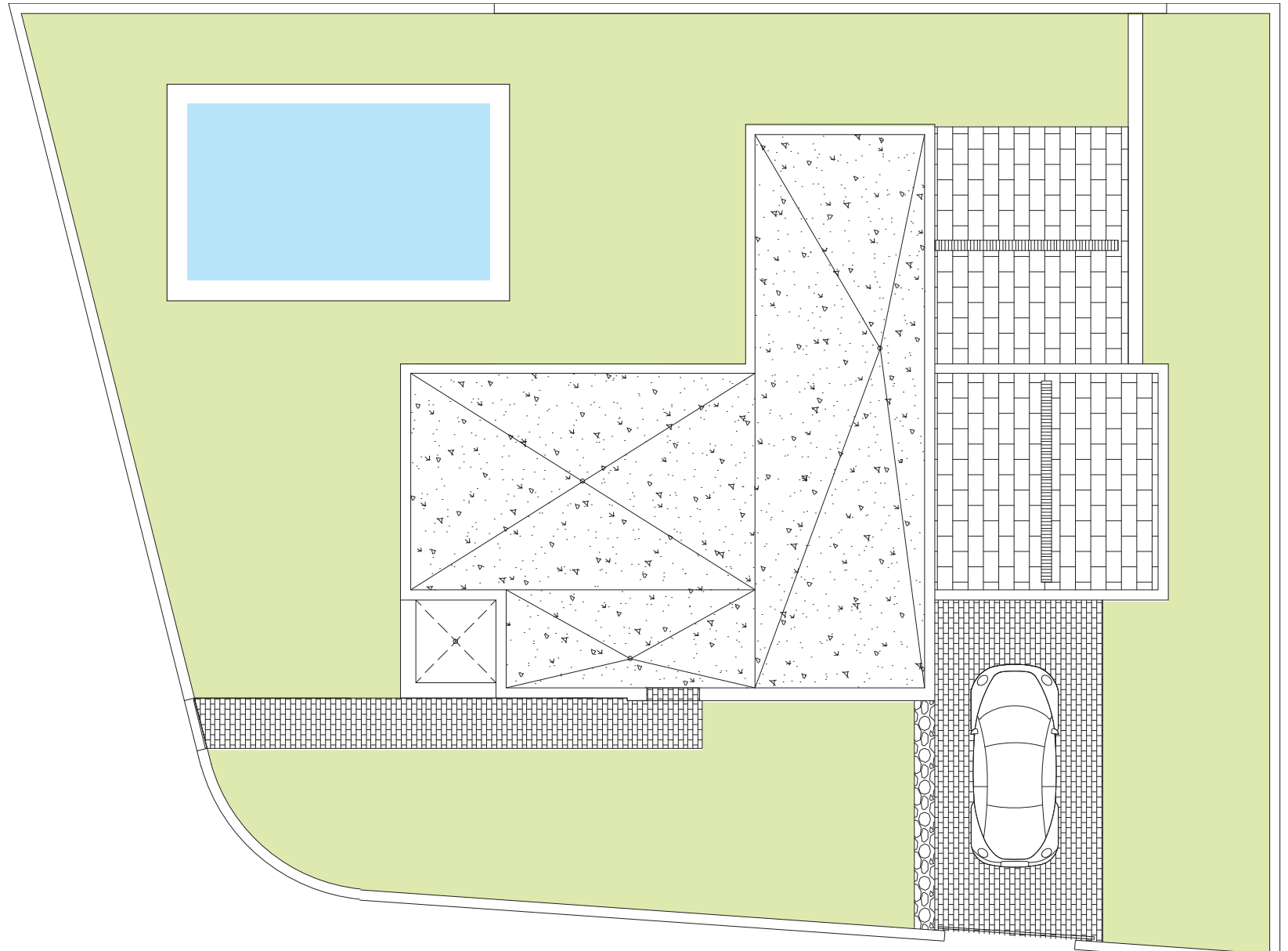
**PATRIMI**

# Villa Dinant



## Built surfaces

Built area	155,70
Pool area	8x4
Terraces area	59,00



Legal Notice: Standard floor plan, which does not include the common use areas. Each residence has its own floor plan, which may vary slightly from the standard one. The furniture and household items that appear in the plan are merely for decorative purposes. This is not a contractual document. This plan can be modified by the Project Management Team according to construction or design needs.

All measures are expressed in M2.

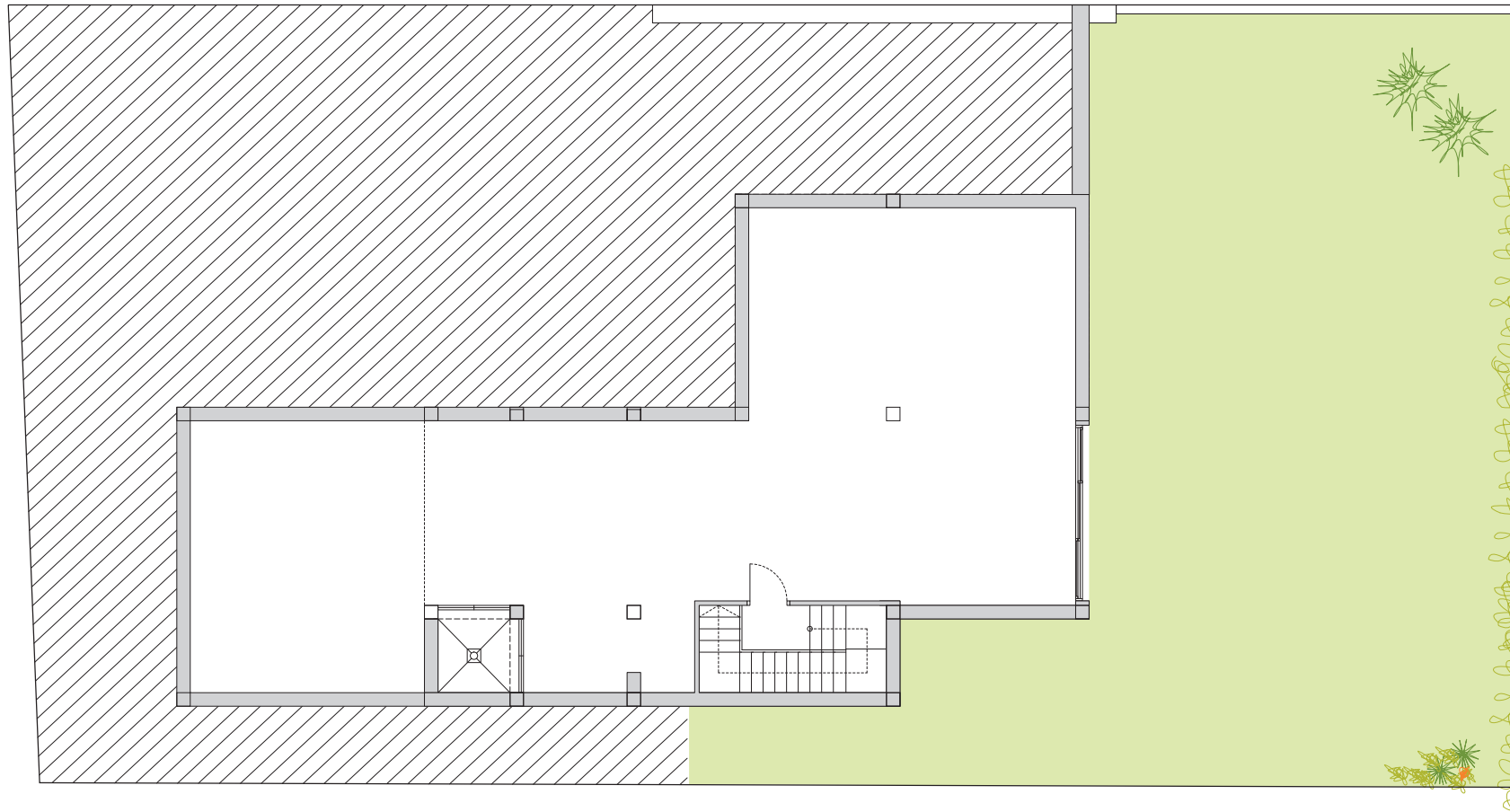
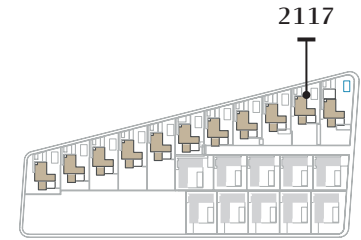
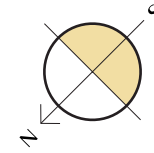
**PATRIMI**



## **Villa Dinant Plus, Floor Plans & measures - House 2117**

Villa Dinant +  
Basement  
Floor

Built surfaces	
Basement area	102,00
Pool area	8x4
Terraces	59,00



Legal Notice: Standard floor plan, which does not include the common use areas. Each residence has its own floor plan, which may vary slightly from the standard one. The furniture and household items that appear in the plan are merely for decorative purposes. This is not a contractual document. This plan can be modified by the Project Management Team according to construction or design needs.

All measures are expressed in M2.

PATRIMI



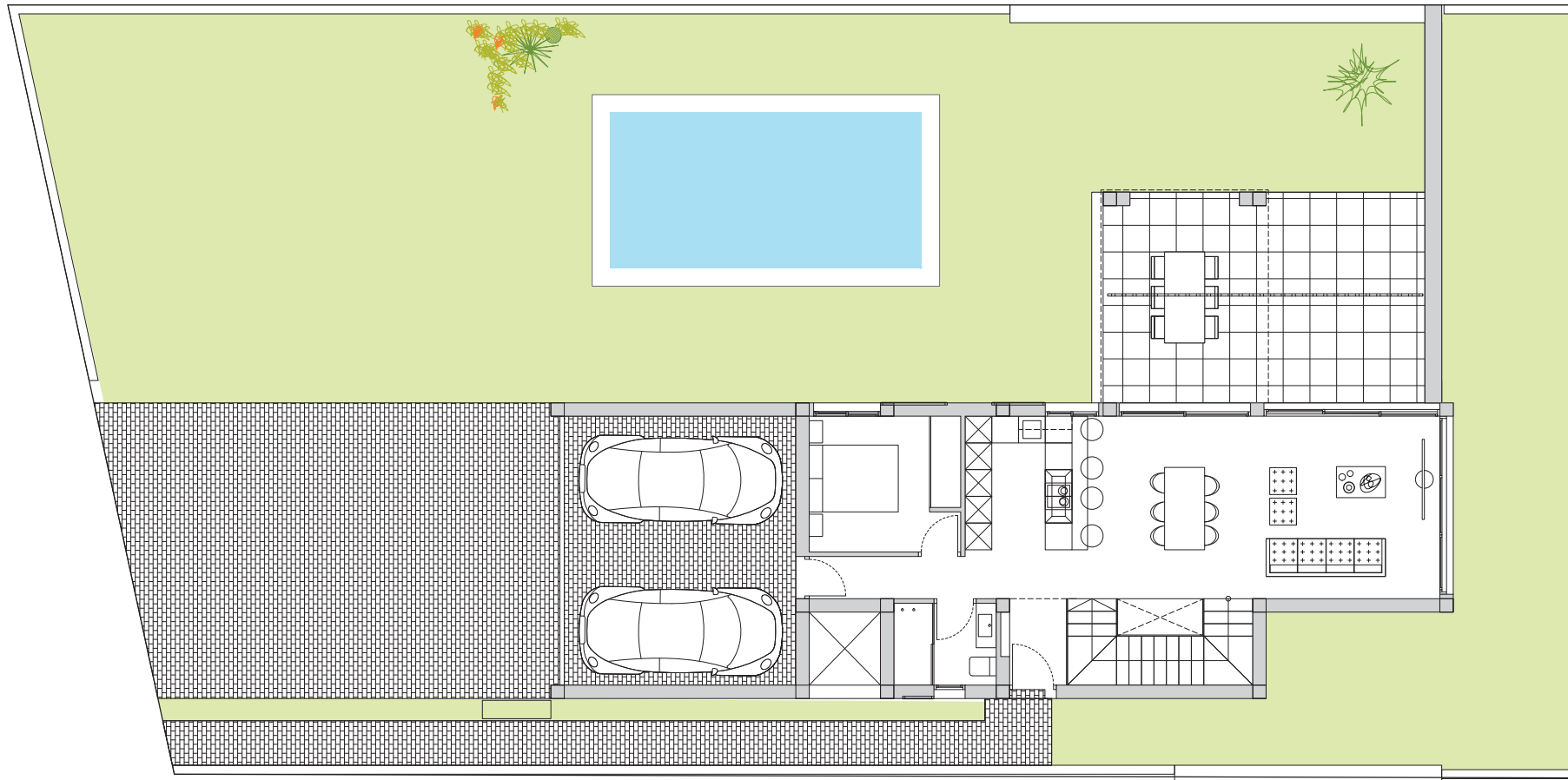
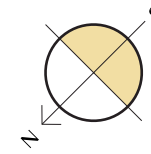
# Villa Dinant +

## Ground floor.



### Built surfaces

<b>Built area</b>	155,70	<b>SKC</b>	43,70	<b>Corridor</b>	0,80
<b>Pool area</b>	8x4	<b>Bedroom 1</b>	12,60	<b>Hall</b>	2,47
<b>Terraces</b>	59,00	<b>Bathroom 1</b>	4,20	<b>Stairs</b>	6,40
				<b>Parking</b>	31,40



**BUILDING  
YOUR TIME**

Legal Notice: Standard floor plan, which does not include the common use areas. Each residence has its own floor plan, which may vary slightly from the standard one. The furniture and household items that appear in the plan are merely for decorative purposes. This is not a contractual document. This plan can be modified by the Project Management Team according to construction or design needs.

All measures are expressed in M2.

**PATRIMI**

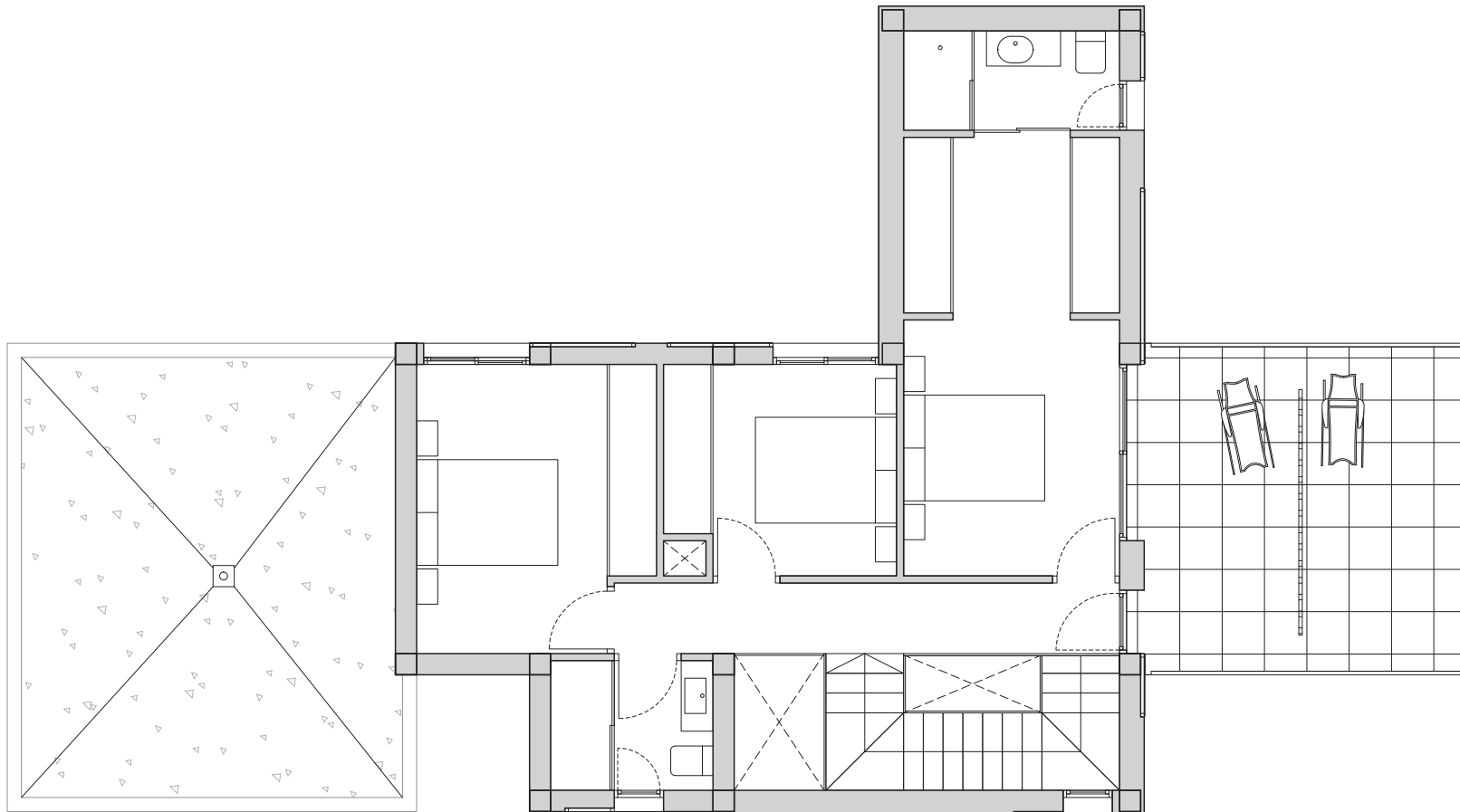
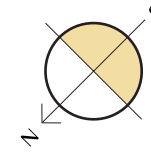
# Villa Dinant +

## First floor.



### Built surfaces

Built area	155,70	Bedroom 2	19,00	Bathroom 3	4,30
Pool area	8x4	Bedroom 3	9,50	Corridor	7,2
Terraces	59,00	Bedroom 4	13,17	Stairs	6,40
		Bathroom 2	4,30		



*Specifications*



# Specifications



## Doors

Main Entrance armored door with exterior antracite grey and white interior pannel.  
White lacquered interior doors with stainless steel square handlers.  
Built in wardrobes with white sliding doors.

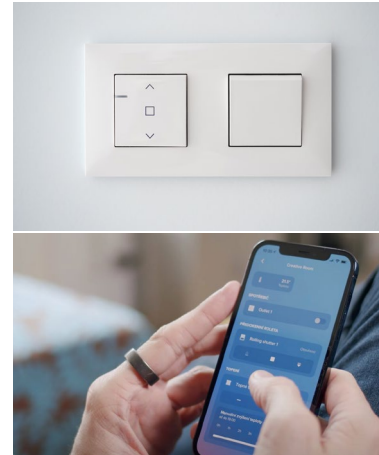
## Windows and shutters

Grey aluminum carpentry with electric blinds. Tilt and turn system in bathrooms windows.



## Interior and exterior Flooring

Cement imitation porcelain stoneware.



## Electric fittings

Mechanism Valena Next from Legrand.  
Alarm system totally fitted that includes: sensors, touch panel, siren and two cameras.  
Ducted Air-conditioning pre-installation.



## Additional qualities



Air-conditioning pre-installation: central or split depending of the model.



Fully fitted alarm system with one sensor by room, touch pannel and siren.

## Villas Dinant

# Specifications



### Bathrooms

60 x 30 cm white mate tiling combining with great scale imitation Terrazzo porcelain and Italian shower with grill.

Italian shower equipped with shower screen, mixed taps KALA model from GRB.

A hanging imitation wood unit and sink over worktop with KALA mixer taps.

Ensuite bathroom equipped with a hanging unit with imitation wood worktop with white drawers and rectangular sink over worktop.

Underfloor heating with thermostate.

### Kitchen

White melamine furniture and wood effect.

Integrated extractor hood Cielo MEPAMSA model.

Retrostone imitation terrazzo worktop from NEOLITHE .

The 40 cm built in sink is completed with a GRB high pipe tap Kala model.





PATRIMI

**BUILDING  
YOUR TIME**

**Villas Dinant**

Detached villas at La Finca Golf.