



Homes 

Victoria Bay

Apartments and penthouses
100 m from the beach

1,2 and 3 bedrooms

Penthouses with solarium

SUBA ✓

SUBA

Natural environment

A village by the sea

Victoria Bay is located on Benagalbón beach in Rincón de la Victoria.

A vibrant village, filled with restaurants, shops, shopping centers, educational and healthcare facilities, and all the other necessary services for everyday life.

Its proximity to the capital and the Costa del Sol expands its possibilities for assistance, leisure, and culture to such an extent that they become boundless..



SUBA

Life beach

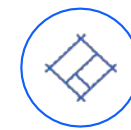
Living in Rincón de la Victoria means living in the tranquility of a municipality where you'll have everything nearby. **A unique environment, with the best climate in Europe** and a high quality of life far from the noise.

Your home is **just 100 meters from the sea**, a short walk from uncrowded beaches and coves.

Living in El Rincón means being **20 minutes away from Malaga**, its marina, its cultural life, its entertainment and its enormous gastronomic offer,

Whether to enjoy your holidays or to live here all year round will be what you have to decide when you're here.



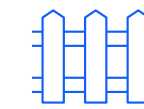


The project

Victoria Bay has been designed by the architecture firm **969 Architects**. This team of architects holds doctorates in Sustainable and Low Consumption Architecture and has been recognized in recent years with numerous national and international awards, including the 2022 Málaga Architecture award.

The residential design follows a clean aesthetic that prioritizes the brightness of the homes, with **penthouses and spacious outdoor terraces**. Its interior distribution is designed to create very welcoming and functional spaces.

The effective organization of the common areas, its complete facilities, energy efficiency and the excellence of the materials complete the quality of the proposal.



The residential

Quality of life also depends on being able to enjoy common relaxation spaces. **Victoria Bay is equipped with a rooftop terrace meticulously designed and equipped with landscaped areas, relaxation zones, and an infinity pool that will gift you many moments you'll want to cherish forever.**

The residential complex comprises 28 apartments with 1, 2, and 3 bedrooms mainly oriented towards the afternoon sun, where all families will find the space they need. Additionally, there are two basement floors for garages and storage rooms.

SUBA



Houses designed for you

Spacious and comfortable spaces designed with your well-being in mind. Open kitchen layouts to make your daily life easier and help you enjoy your surroundings more.

Bright, well-organized spaces, all meticulously designed with care to offer you **a more comfortable living experience.**

We want you to feel that when you step into your home, **we've already thought of everything** you might need.



SUBA

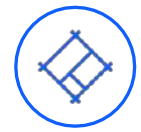


Your space away from home

The **spacious terraces** of Victoria Bay will turn your evenings into **endless gatherings** to share with family or loved ones.

Design your space **your way**, plan it to your liking, and **complement it with a landscape of incredible views**. And most importantly, enjoy it.





Design

Large-format porcelain stoneware flooring in high-quality customizable tones and colors to reflect who you are. Aluminum carpentry with thermal break and double glazing to ensure that no heat is lost in your daily life. Interior carpentry of the house lacquered in white, which will bring brightness to all spaces.



Comfort

Bedrooms with built-in wardrobes, blinds, lighting, and socket distribution oriented for your comfort. The open kitchen connected to the living room, fully installed, will make your life easier from day one. Aerothermal system for efficient energy consumption in water generation and home climate control.



Bath

Looking for the best design, they will be finished with porcelain stoneware up to half height and the rest with white plastic paint. You'll have the option to choose between a shower or bathtub, equipped with a shower column, single-lever faucets, washbasins with mirrors and vanity units, etc.



Security

You will protect the house with high security doors and video intercom so you can see everyone who comes to your house. Basic home automation will also help you control that nothing happens to you when you are inside or outside the house.



Exterior

Access to the house from the first floor designed with plenty of space and with plant islands that breathe directly from the top floor to give plenty of light from the moment you enter. On the roof of the building there will be a relaxation area with infinity pool, perfect for enjoying the sunset with maximum privacy.

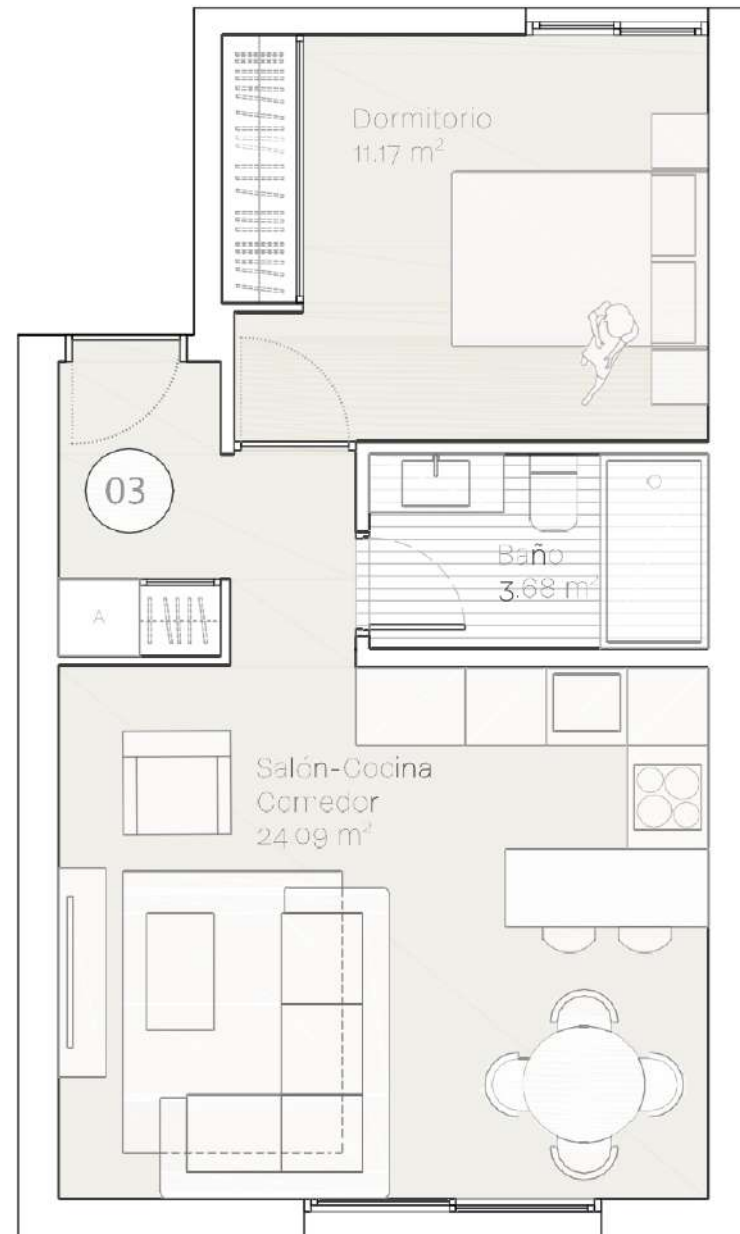


Efficiency and sustainability

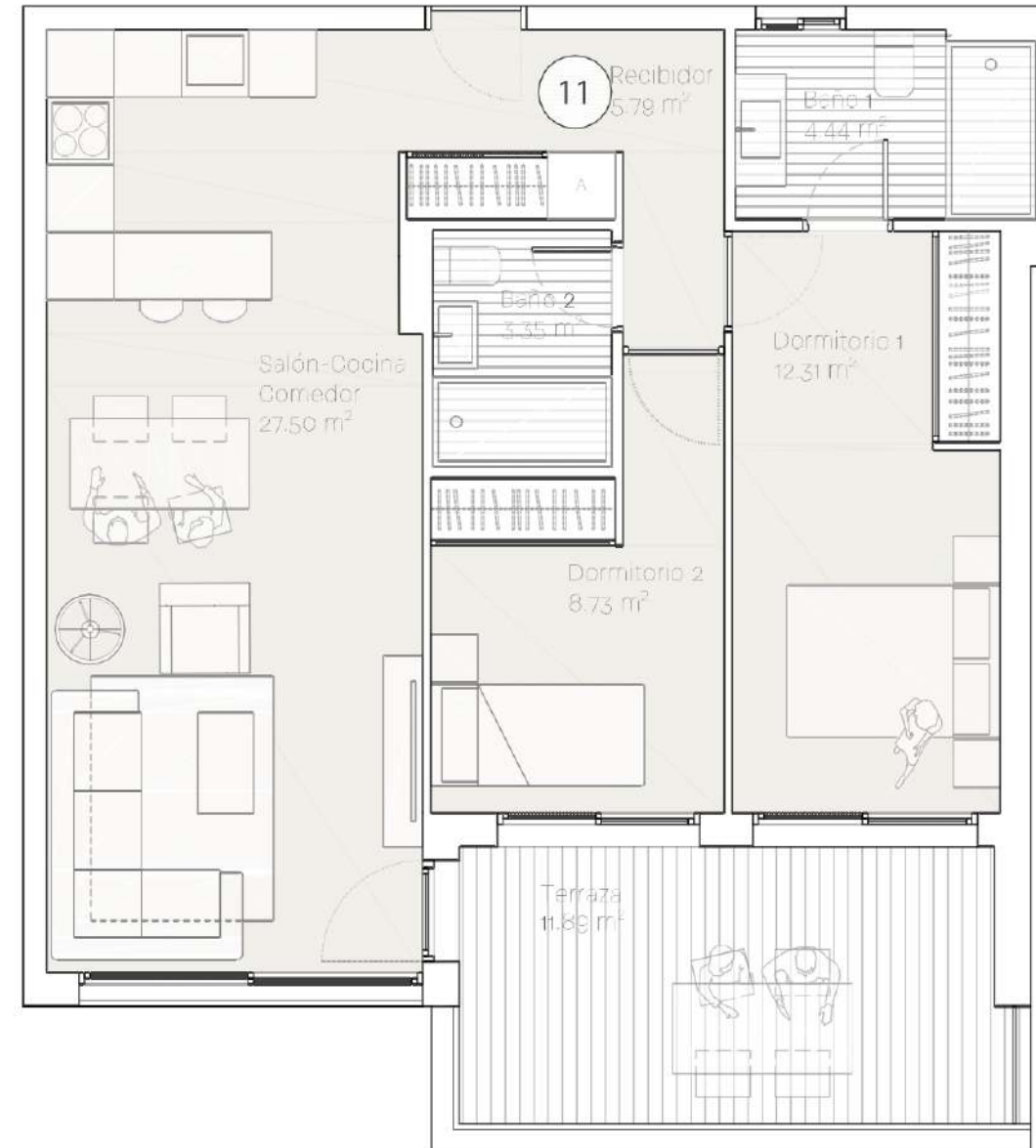
Victoria Bay is designed with energy efficiency in mind. The materials, technology and design used reduce the environmental impact and energy demand, increasing the efficiency of the facilities. The result is greater savings, reduced emissions, lower maintenance costs and greater indoor comfort that benefits your economy, well-being and the health of your family and friends.



1 bedroom



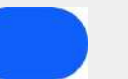
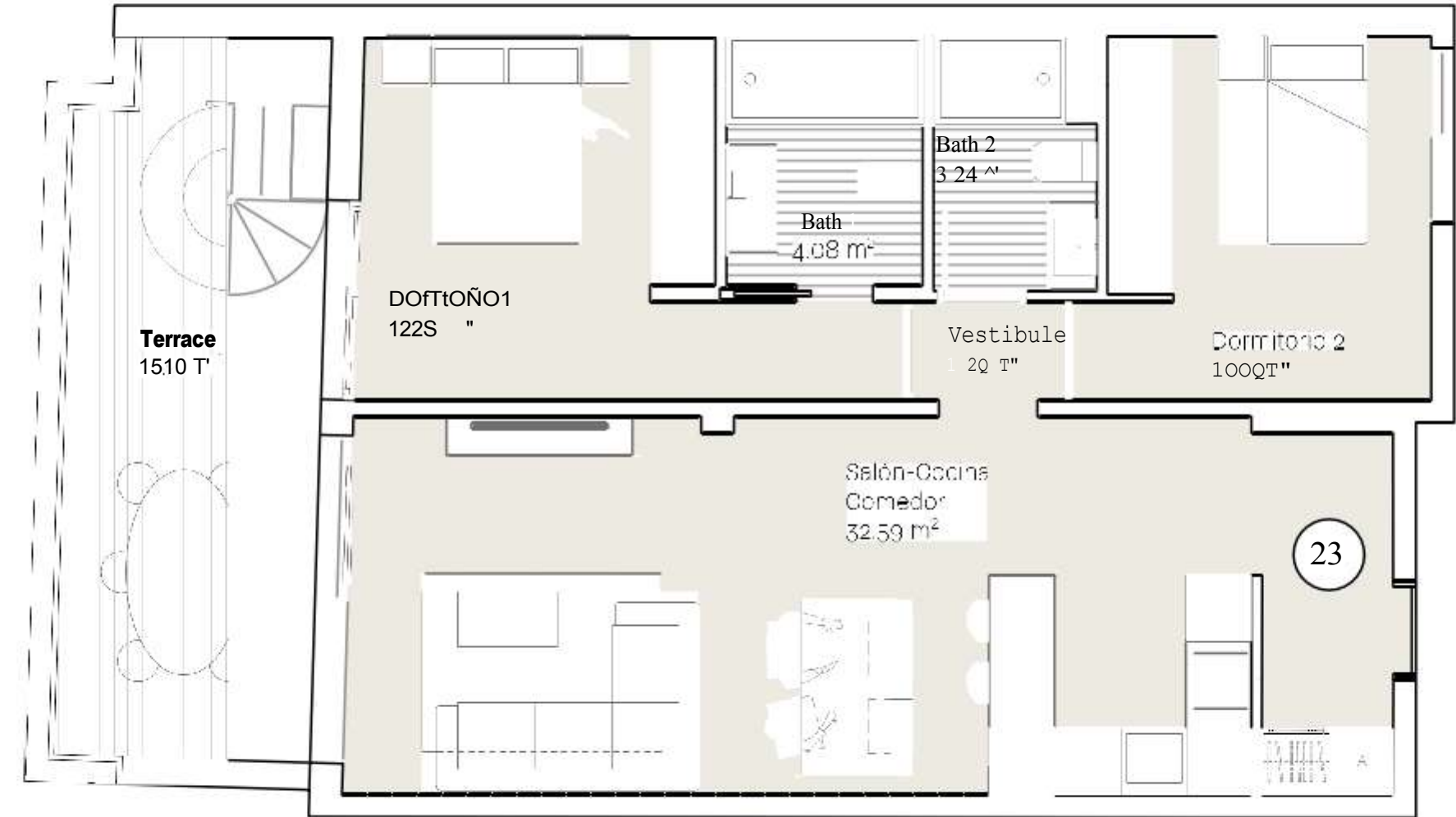
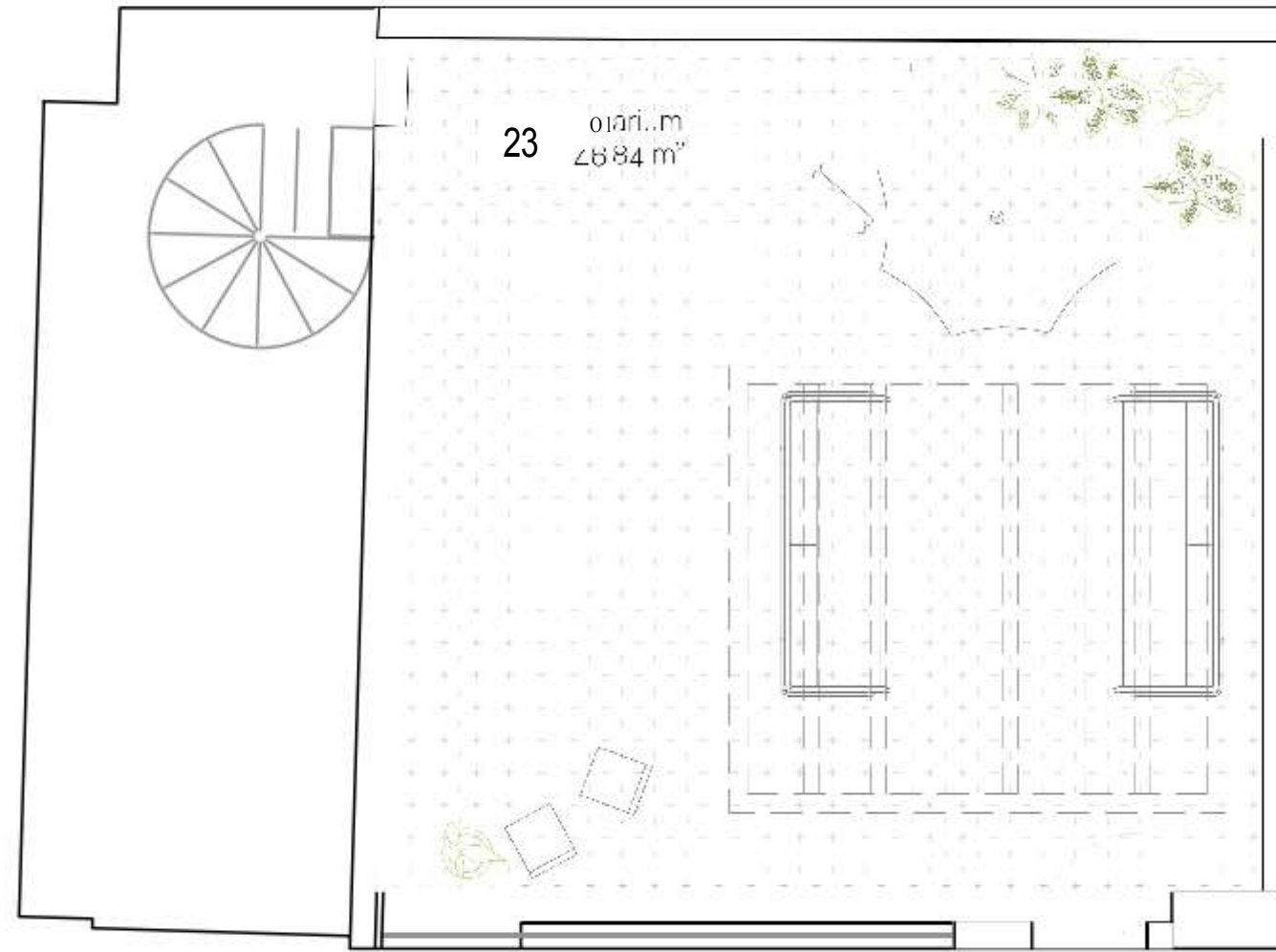
2 bedrooms

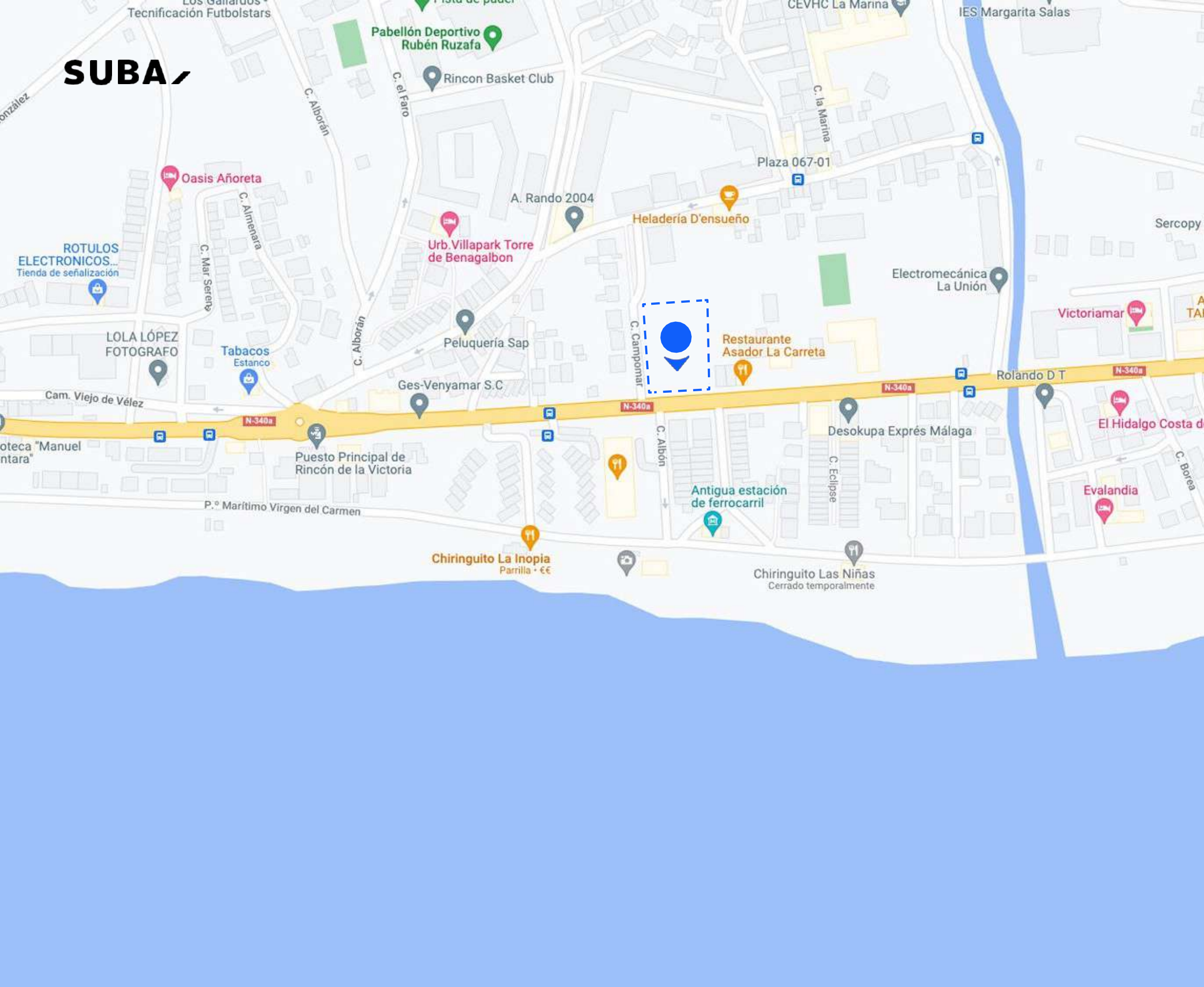


3 bedrooms



Penthouse with solarium





SUBA



Situation



Sports facilities



Schools and kindergartens



Supermarkets



Pharmacy



Airport



Highways



AVE



Nautical center



Leisure and restaurants



Shopping malls



Offices and hospitals



Golf Club

suba.es