

**BOUGAINVILLEA**  
ESTEPONA

| 033_SUP. ÚTIL |      |
|---------------|------|
| Nombre        | Área |

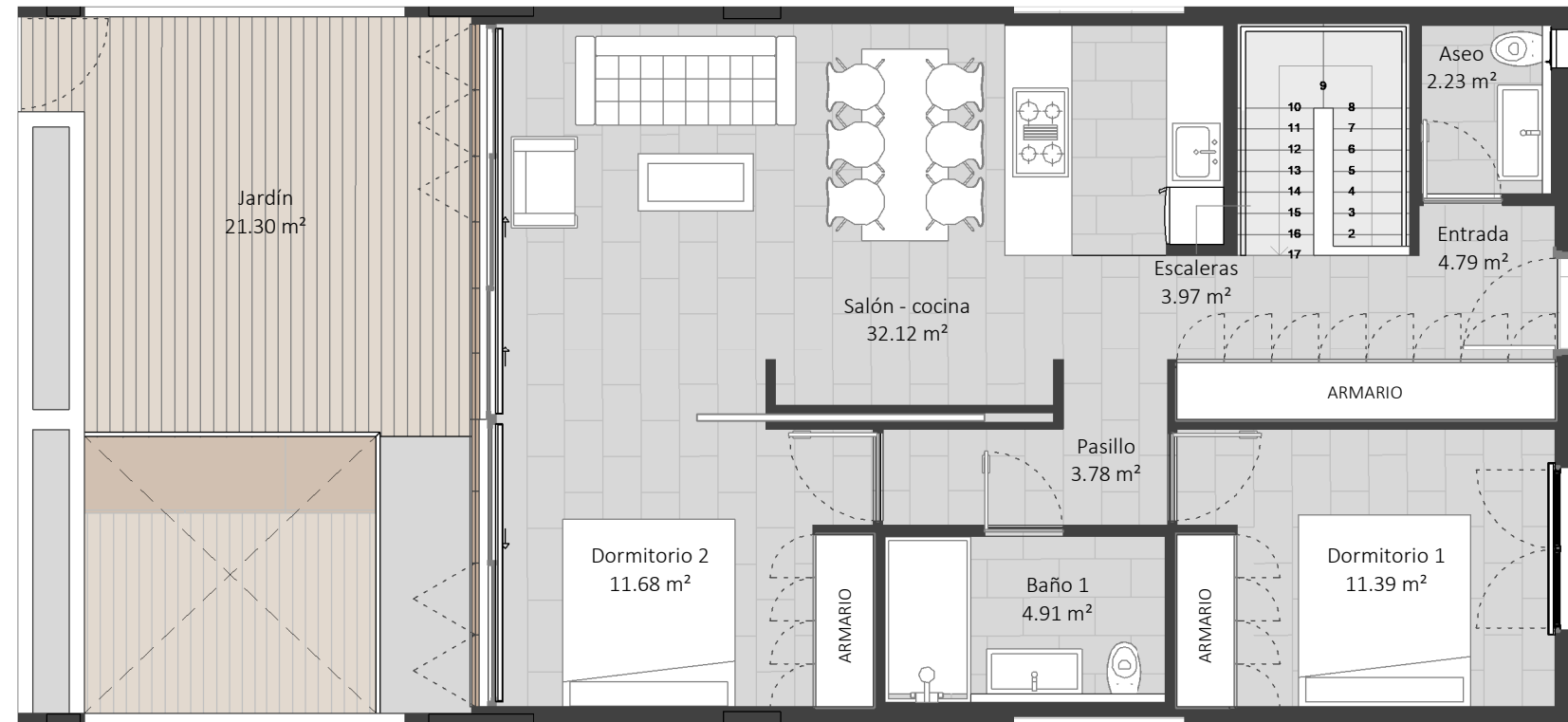
|                |                      |
|----------------|----------------------|
| S01            |                      |
| Aseo           | 2.23 m <sup>2</sup>  |
| Baño 1         | 4.91 m <sup>2</sup>  |
| Dormitorio 1   | 11.39 m <sup>2</sup> |
| Dormitorio 2   | 11.68 m <sup>2</sup> |
| Entrada        | 4.79 m <sup>2</sup>  |
| Escaleras      | 3.97 m <sup>2</sup>  |
| Jardín         | 21.30 m <sup>2</sup> |
| Pasillo        | 3.78 m <sup>2</sup>  |
| Salón - cocina | 32.12 m <sup>2</sup> |

|              |                      |
|--------------|----------------------|
| S02          |                      |
| Almacén      | 1.08 m <sup>2</sup>  |
| Baño 2       | 4.31 m <sup>2</sup>  |
| Distribuidor | 2.86 m <sup>2</sup>  |
| Lavadero     | 5.18 m <sup>2</sup>  |
| Patio ext.   | 11.74 m <sup>2</sup> |
| Patio int.   | 11.79 m <sup>2</sup> |
| Sala 1       | 15.38 m <sup>2</sup> |
| Sala 2       | 30.40 m <sup>2</sup> |

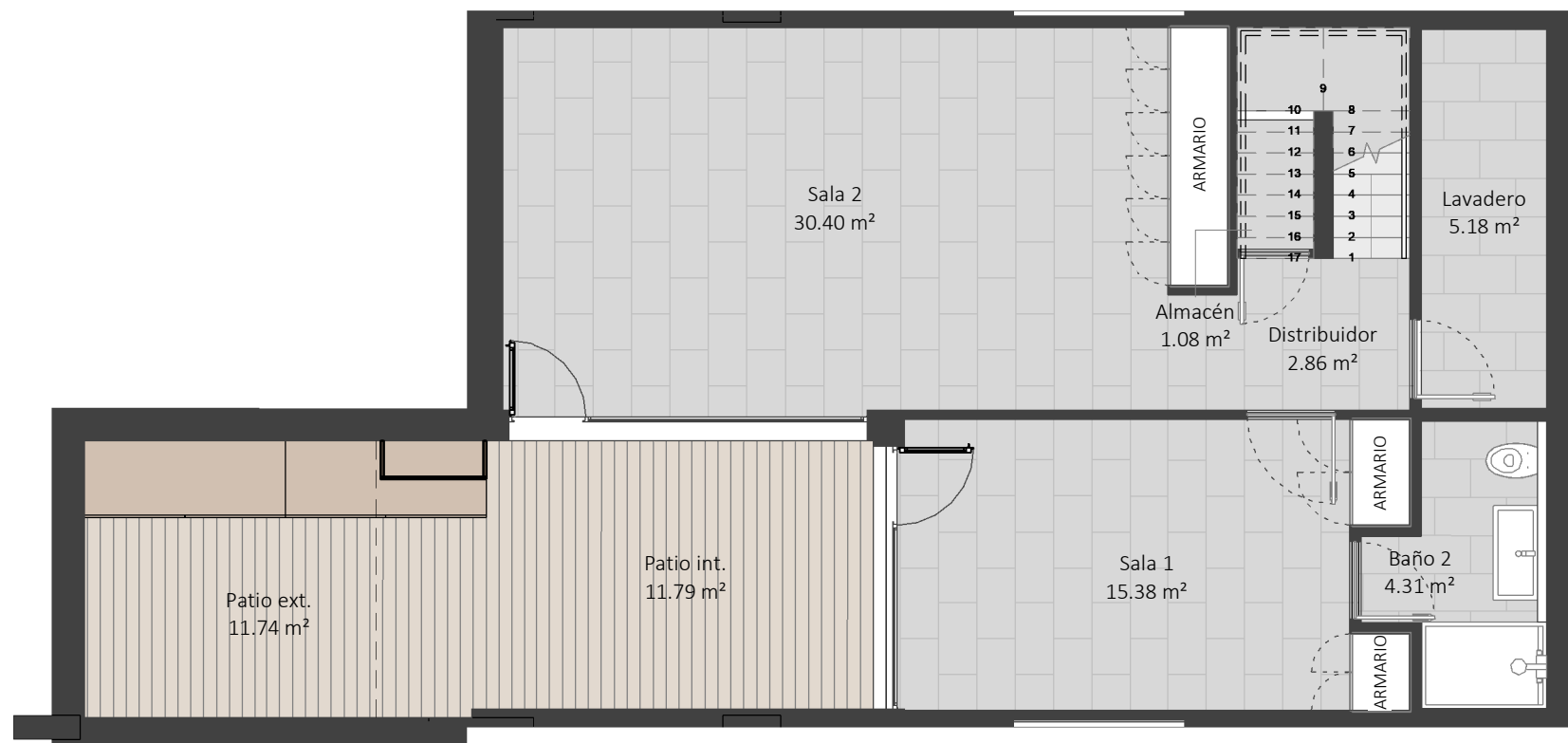
|               |                       |
|---------------|-----------------------|
| Total general | 178.93 m <sup>2</sup> |
| Interior      | 134.09 m <sup>2</sup> |
| Exterior      | 44.84 m <sup>2</sup>  |

| 033_SUP. ÚTIL BOJA |                       |
|--------------------|-----------------------|
| 033                | 147.50 m <sup>2</sup> |

| 033_SUP. CONSTRUIDA      |                       |
|--------------------------|-----------------------|
| 033                      | 159.10 m <sup>2</sup> |
| 033_SUP. CONSTRUIDA BOJA |                       |
| 033                      | 233.99 m <sup>2</sup> |



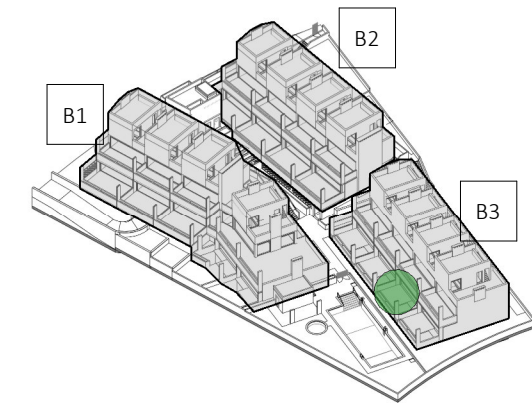
**Planta Baja** / GROUND FLOOR



**Planta Sótano** / BASEMENT FLOOR

**UBICACIÓN DE LA VIVIENDA**

/ UNIT LOCATION



**Axonometría**



**Planta Sótano 1**



**Sección Bloque 3**

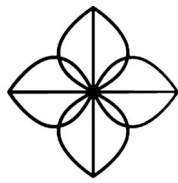
**VIVIENDA 033 - TIPO 2**

/ DWELLING 033 - TYPE 2

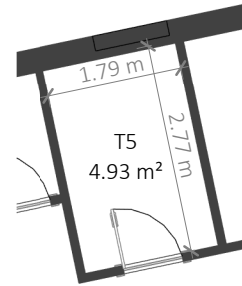
El documento tiene carácter meramente informativo, incluye una parte gráfica y datos relativos a superficies que pueden ser objeto de modificaciones ordenadas por los organismos públicos competentes y/o exigencias técnicas o jurídicas, siempre y cuando estén justificados y no supongan alteraciones sustanciales. El mobiliario mostrado no está incluido y el equipamiento del inmueble será el indicado en la correspondiente de memoria de calidades.

A3 - 1/75

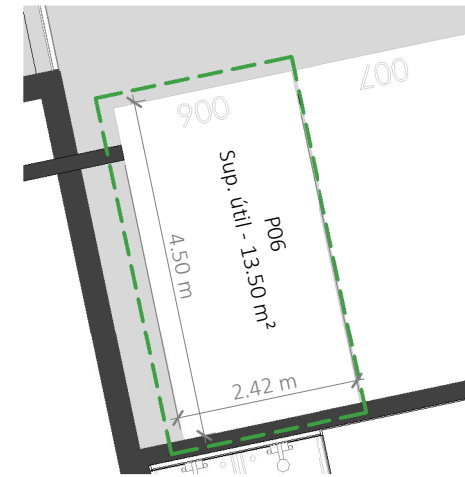
This document is for information purposes only, it includes graphics and details regarding footages which may be subject to modifications ordered by competent public institutions and/or to comply with technical or legal requirements, provided they are justified and do not involve substantial alterations. The furniture displayed is not included; the fittings of the property will be those indicated in the corresponding building specifications.



**BOUGAINVILLEA**  
ESTEPONA



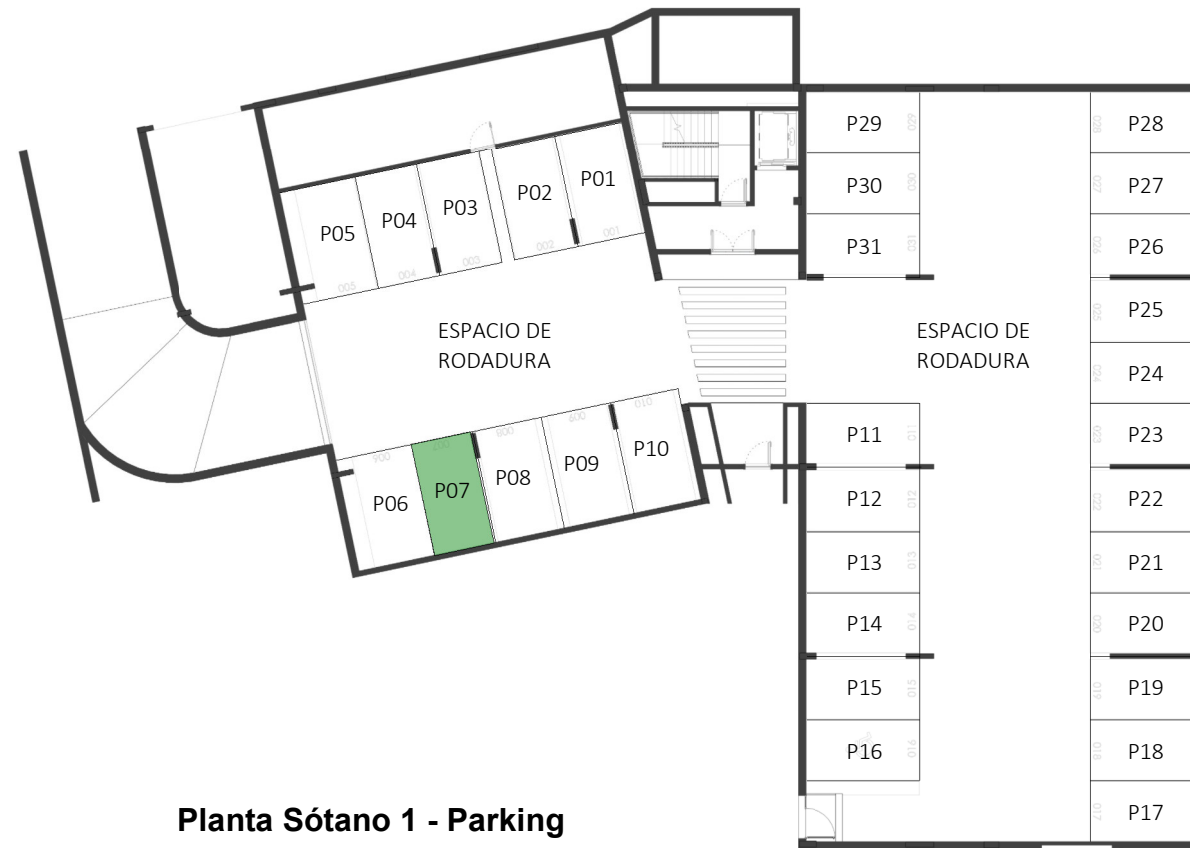
**Planta Sótano 2 - zoom trastero**  
1 : 100 / S02 - STORAGE ROOM ZOOM



**Planta Sótano 1 - zoom parking**  
1 : 100 / S01 - PARKING AREA ZOOM



**Planta Sótano 2 - Trasteros**  
/ S02 - STORAGE AREA

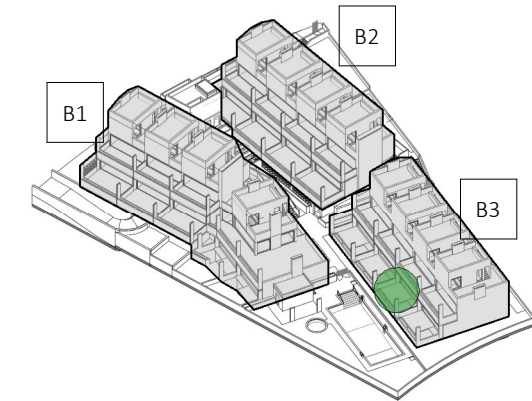


**Planta Sótano 1 - Parking**  
/ S01 - PARKING LOTS

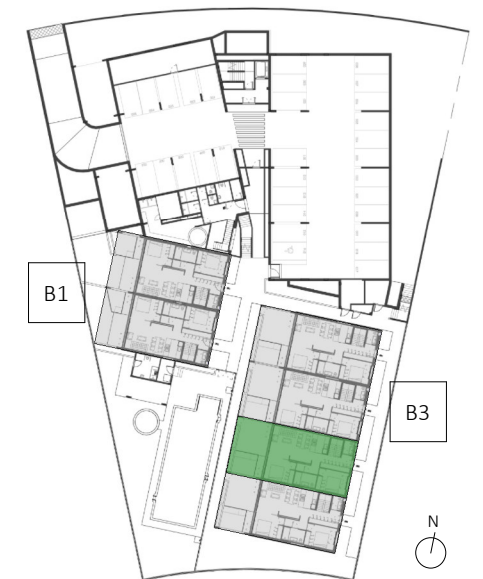
| Vivienda | Número | Sup. Útil            | Sup. Construida      | SC + ppRodadura      |
|----------|--------|----------------------|----------------------|----------------------|
| 033      | P06    | 13.50 m <sup>2</sup> | 12.63 m <sup>2</sup> | 24.58 m <sup>2</sup> |

**UBICACIÓN DE LA VIVIENDA**

/ UNIT LOCATION



**Axonometría**



**Planta Sótano 1**



**Sección Bloque 3**

**VIVIENDA 033 - ANEJOS**

/ DWELLING 033 - ADDITIONAL SPACES

El documento tiene carácter meramente informativo, incluye una parte gráfica y datos relativos a superficies que pueden ser objeto de modificaciones ordenadas por los organismos públicos competentes y/o exigencias técnicas o jurídicas, siempre y cuando estén justificados y no supongan alteraciones sustanciales. El mobiliario mostrado no está incluido y el equipamiento del inmueble será el indicado en la correspondiente de memoria de calidades.

This document is for information purposes only, it includes graphics and details regarding footages which may be subject to modifications ordered by competent public institutions and/or to comply with technical or legal requirements, provided they are justified and do not involve substantial alterations. The furniture displayed is not included; the fittings of the property will be those indicated in the corresponding building specifications.



A3 - 1/100



A3 - 1/300

